

SEBU

Manual

MAY

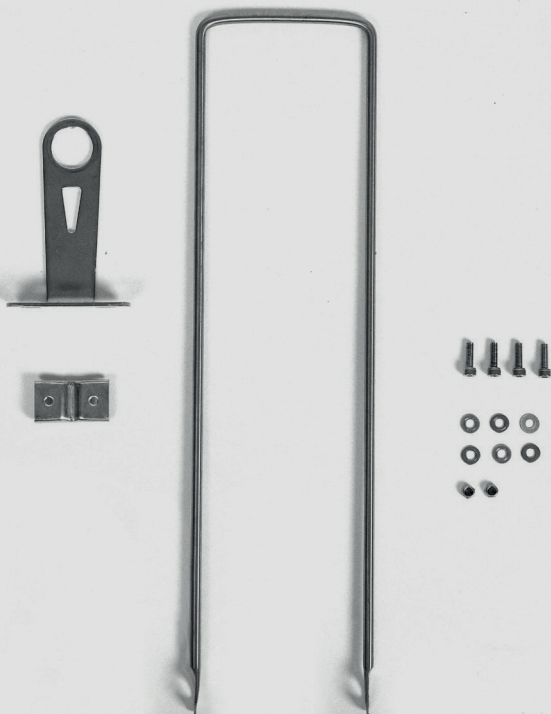
Co., Ltd

Accessories

SEBU



The following parts are packed together with the basket:

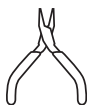


Tools (not provided):



ALLEN KEY

Size 4



SMALL PLIERS



WRENCH

alternatively big pliers

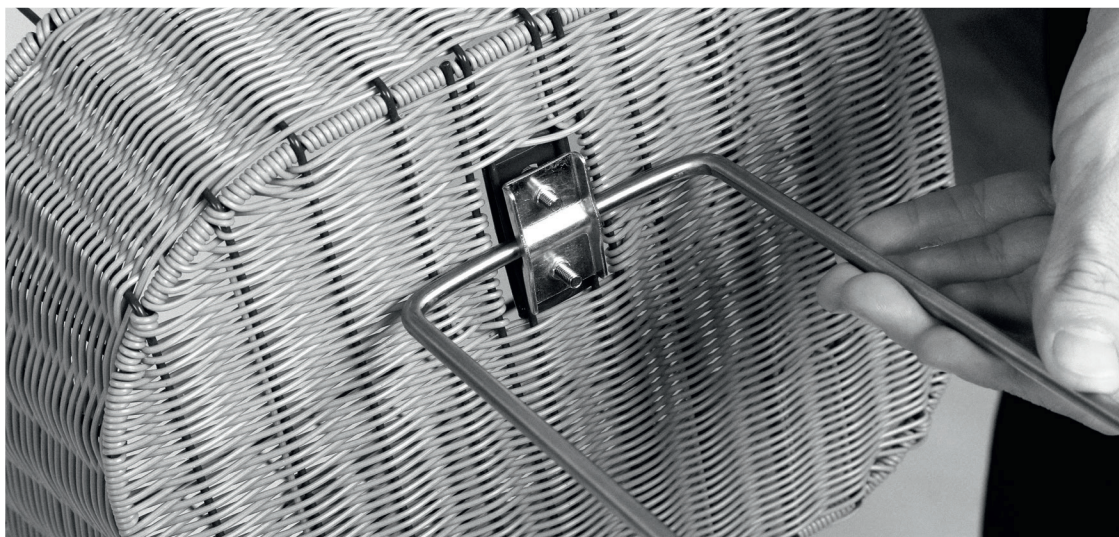
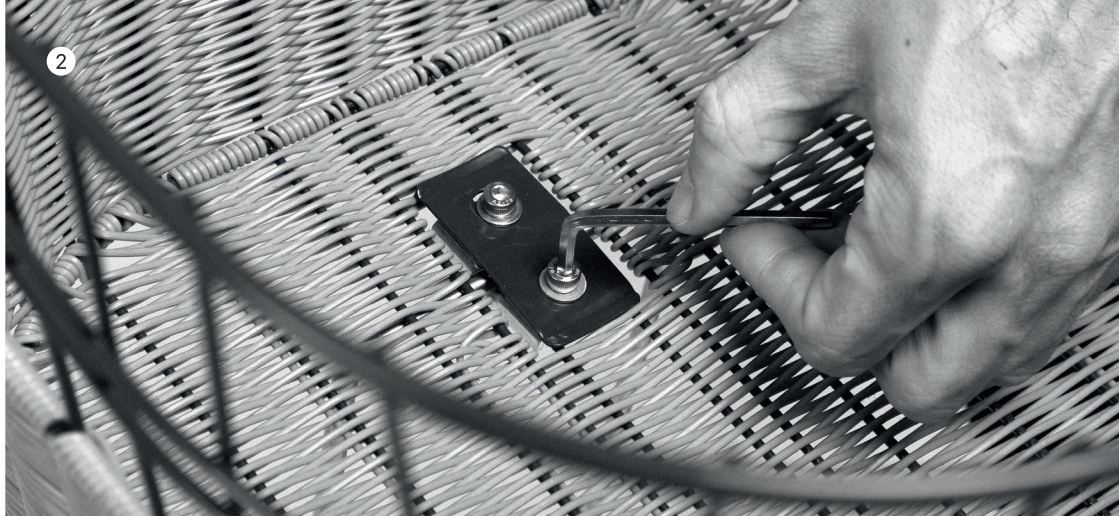
1



Step 1: **ATTACHING THE STEM BRACKET TO THE BASKET:**

Use the nuts and bolts provided to attach the basket frame to the stem bracket according to the photo. You can adjust the height to your liking.

2



Step 2: **INSTALLATION OF THE FORK SPLINT TO THE BASKET:**

Mount the splint legs to the bottom of the basket by fixing the lock nuts to the steel plate and tighten the screws.

3



Step 3: **INSTALLING THE BASKET TO STEM:**

Loosen the nut on top of the stem that holds the handlebars and stem in place. Lift the handlebars upwards to remove them. Remove the hexagonal lock nut on top of the head tube according to the photo and put the stem bracket of the basket in place. Reattach the hexagonal lock nut and the handlebars/stem making sure the handlebars are aligned at right angles with the front tire. Tighten the nut.



Step 4: **ATTACHING FORK SPLINT TO FORK EYELETS:**

Remove the existing screw nuts that are supporting the fork in the hub hole of the front tire. Insert the fork splint and reinstall the screw nuts. Use a wrench to tighten the screw nuts properly.



Follow and contact us on Instagram:

@may_ltd
info@may-ltd.com

MAY International SA
Bahnhofstrasse 134
8957 Spreitenbach
Switzerland

www.may-ltd.com